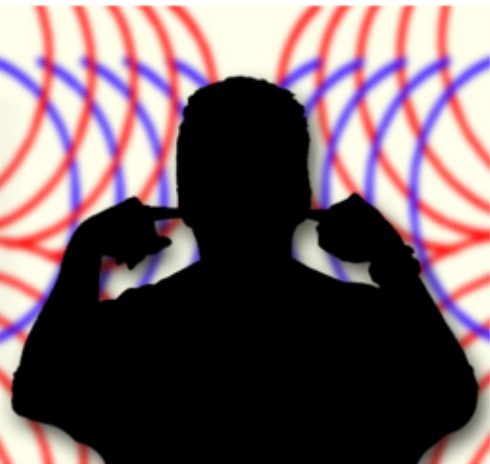


Does Your Space Have Too Much Sound?

Do You Want to Dampen Your Sound But Dont Know Where to Start?



For expert answers, we contacted DeWayne Segafredo of CL Pugh & Associates. CL Pugh & Associates is a manufacturer representative for professional audio, lighting, and video equipment. DeWayne was kind enough to answer some common questions our customers had about sound dampening equipment. Here is what he had to say:

What advice can you give to someone who is having sound issues but doesn't know where to start?

Always bring in a Professional A/V or Acoustical company to assess your needs. Many customers attempt to solve issues on their own or ask a friends opinion, then end up spending more money in the long run to actually fix the problem. Professional and reputable companies are trained to diagnose the issues, provide solutions, and follow up with service and support.

What are the biggest misconceptions regarding sound deadening equipment?

"Anything you put on the wall with help." This is incorrect. Companies like Prime Acoustics spend time in scientific research to figure out what materials work best for problems regarding room acoustics. Not all absorption materials are created equal and not all acoustic issues are the same.

What is the most asked question from a potential customer?

How much treatment do I need? We (professional companies) use mathematical configurators to apply the correct treatment for each room. We are cautious not to over treat a room by providing incorrect or too much absorption. It has been shown churches that are too "dead" tend to lack response in hymn singing due to the members feeling like they are singing only with themselves and not as part of the whole congregation. ... We look at everything in the room that affects what people hear: The Sound System Components, Placement of the Sound System, and Equalization of the Sound System. Then we start working on how to treat the issues that are acoustical issues.

What kind of panels would you recommend to a school retrofitting a classroom to a television studio?

Prime Acoustics developed the London Room Kits for purposes such as this. These kits are designed for typical rooms that just need basic treatment. These selections of the Broadway Panels include a collection of panels to control primary reflections, flutter echo, and excessive bass. Nothing beats having a professional look at the room first to make sure the treatment is correct for the room.

Ok, so what makes Primacoustic products better than the competitors?

In order of importance, Quality & price. Treating a room correctly doesn't have to be overly expensive, but it does have to be the right product and installed correctly. Primacoustic's products cover everything from Acoustical Panels, Acoustic Ceiling Tiles, BassTraps, Diffusers, Radiators, Baffles, and Acoustic Lanterns. Another difference I see is in the amount of measured data. Primacoustic has the basic data of each panel...Knowing how to interpret this data, and apply it to the true problems of each space, will provide the best solution.

Pittsburgh Stage is an authorized installer of Primacoustic products, as well as many other brands of sound dampening equipment. For a no cost consultation of your facilities needs, contact Pittsburgh Stage.

: 877-734-3902 : Click to Email



Start to Finish and Beyond, Pittsburgh Stage's Commitment to Service.

Since its inception in 1942, Pittsburgh Stage has endeavored to provide our customers with the best quality products and services in the industry. One of our primary objectives is to be able to design, install, and service all theatrical equipment. This month's featured school, West Mifflin Area Middle School, is a reflection of this goal.

The West Mifflin project was a new construction installation. Pittsburgh Stage was responsible for installing the counterweight rigging system, stage and acoustical curtains, acoustical clouds, lighting system, and custom cabinetry to house both sound and lighting boards.

Below is our contribution to the project outlined in images.



The West Mifflin rigging design is composed of a 31 set counterweight system.



Pittsburgh Stage manufactured and installed acoustical clouds, allowing for better sound deflection toward the audience.



Pittsburgh Stage also designed custom curtains for the new auditorium. This included a full set of stage curtains, as well as synced, retractable, sound dampening acoustical curtains. The acoustical curtains can be extended or retracted into custom pockets with the push of a button.



The new lighting system installed by Pittsburgh Stage included traditional lamp fixtures, and variable color LED fixtures.



Custom cabinetry was provided by Pittsburgh Stage to house both the sound and lighting boards.

West Mifflin School District was very pleased with these results. The school district has stayed with Pittsburgh Stage to provide annual safety checks for their theatrical equipment. Pittsburgh Stage thanks West Mifflin School District for their patronage.

It is our goal to make every client this satisfied. For a free estimate to what Pittsburgh Stage can provide for your facility, contact one of our representatives.

: 877-734-3902

: Click to Email

What our Customers Are Saying



"It was a pleasure working with you, your staff, and crews. Wish more companies were like you"

- GAR Memorial High School



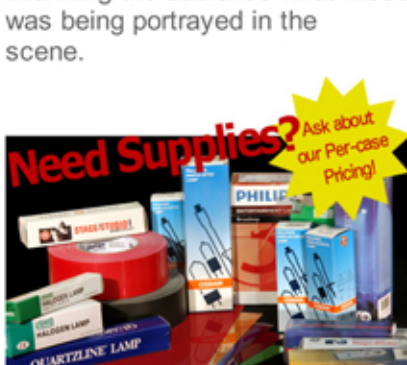
Click Here To See More.



Please Join our Lighting Manager Brian Strom at the PASBO Facilities Management Conference & Exhibits Sept. 25-26, 2013 Radisson Hotel Harrisburg Camp Hill, PA

Did You Know?

The Roman architect Vitruvius writes about the use of a large three-sided rotating machine at the side of the stage in Roman theatres. Each side was decorated with a painted face expressing a different emotion. As the scenes changed during the play, the machine would rotate, informing the audience what mood was being portrayed in the scene.



Tired Of Paying Retail?

Let Pittsburgh Stage Inc. provide all of your incidental needs. We supply most major brands. Gaff tape to lamps, cinefoil to gels; if you need it, we have it.

Ask AN EXPERT

"Our scenery battens were too low when they were down all the way. Some of our kids kept running into them and bumping their heads. Our theater director decided to raise the low height. He said because the cables were wrapped around the battens and tied, that meant that they were adjustable. Since we raised the battens, the arbor doesn't go all the way down and the batten gets caught at the ceiling. What can we do to adjust this?"

-Zac Pennsylvania

Well Zac, you now have a complex situation. For safety purposes, those sets should be taken out of service and secured until a professional rigging contractor can be consulted. Only an on-site inspection by qualified rigging personnel can properly determine the correct course of action. Here is an explanation as to what is most likely the cause of the malfunction.

Wrapping the cables, as you called it, used to be a common way to attach cable to battens. The cable is not wrapped, rather tied in a clove hitch knot. Those knots can be adjusted slightly, but are not meant to be adjustable. They are simply another kind of termination. In addition, the low trim was designed to allow both access to the battens, and enough distance for unobstructed travel of the counterweight system. By shortening the cable, there is now not enough length in the cable to allow for full travel. The terminations at the batten are most likely being forced into the loft blocks when the arbor is down.

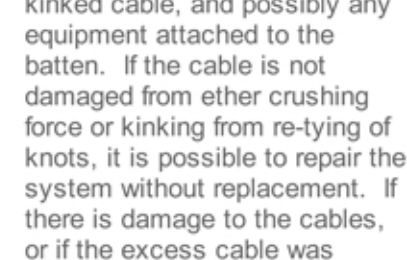
To repair this situation, a rigging contractor must first determine the extent of the damage caused to the system. Damaged parts could include loft blocks, crushed, frayed, or kinked cable, and possibly any equipment attached to the batten. If the cable is not damaged from ether crushing force or kinking from re-tying of knots, it is possible to repair the system without replacement. If there is damage to the cables, or if the excess cable was trimmed off when they were re-tied, then they will most likely need to be replaced.

Have a problem TODAY and a performance TOMORROW? Contact Pittsburgh Stage for Fast and Reliable Service in an Emergency

Call or Email Today 877-734-3902 pghstage@pittsburghstage.com

Email Ask an Expert

EMERGENCY REPAIRS



Have a problem TODAY and a performance TOMORROW? Contact Pittsburgh Stage for Fast and Reliable Service in an Emergency

Call or Email Today 877-734-3902 pghstage@pittsburghstage.com

