



Please Join Us  
**September 25 - 26**  
 at  
**The Facilities Management  
 Conference and Exhibits**  
 Radisson Hotel Harrisburg  
 Camp Hill, PA  
 Our Lighting Manager  
 Brian Strom will be on hand  
 to answer any technical  
 questions you may have.

## Did You KNOW?

In England, women were banned from performing on stage until the 1660s. Young boys and men would play the roles of women because it was deemed an improper act for a woman to appear on stage. This came to an end under the rule of King Charles II. A notable instance occurred during a performance where King Charles II was in attendance. The performance was halted when a man playing the part of the woman did not appear on stage because he wasn't finished shaving. The ban was finally lifted in 1662 making it legal for women to perform.

## Ask AN EXPERT

"I recently bought some dimmable LED light bulbs from the local hardware store to use in our old strip lights. However, when I try to dim them they only dim 30%, then flicker and go out. When I bring the intensity back it take a second to turn on. Are my dimmers bad?"  
 Mark ~ Morgantown W.V.

Don't panic Mark, your dimmers are most likely fine. The most common problem in this situation, is in the LED Lamp itself. This type of lamp requires a certain amount of current to stay on. Above and beyond that base line, is the current that it will reference for dimming. When you go below that point, the current is discharging, causing the flicker and delay that you are referring to. You should look into theatrical LED fixtures that are supplied a constant voltage, dimmed internally and controlled by DMX.

Have a Question for our Experts? Click on the link below and email it to us.

Email [Ask an Expert](#)



**Tired Of Paying Retail?**  
 Let Pittsburgh Stage Inc. provide all of your incidental needs. We supply most major brands. Gaff tape to lamps, cinefoil to gels; if you need it, we have it.

Contact a Representative Today!  
 ☎ : 877-734-3902



## Mechanically Inclined Does Not Equal Rigging Professional

Whether it be financial need, pride, or lack of information, time and time again we see working counterweight and hoist systems damaged by good intentioned mechanics. We also see plenty of dangerous rigging ready to fail. Here are some things to keep in mind before making that "quick and cheap" fix on your theater equipment.



### Every piece has a function.

Theatrical equipment definitely adheres to the "form follows function" rule. If the part has three screws, it needs three screws. Removing parts or swapping out small components for substandard pieces found at home improvement stores can cause cascading failures that can destroy property or injure personnel.

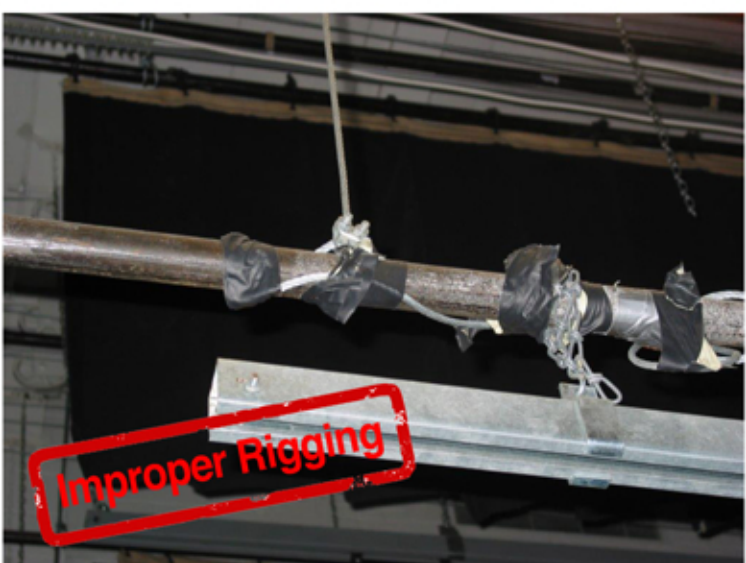
### Put the grease gun down.

Lubrication with a heavy grease or spray lubricant is NEVER a repair for track components. Squealing or grinding during the operation of track or counterweight systems is an indication of damage or misalignment. It cannot be solved with lubrication. Adding this type of material traps dust particles forming sticky mess that will eventually harden.



Do Not Grease Track

Think your theater is clean and this can't happen? Touch the top of a track and see how much dust is working through those newly lubricated parts. Eventually, this grime will wear out or seize the equipment. Tracks and counterweight parts are designed to run without additional lubrication. A squealing or grinding sound can usually be repaired with adjustment or a minor replacement.



### Rigging cannot be repaired with duct tape or utility wire.

Utility wire and duct tape do have a place in theater. That place is on the ground. These materials should never be used to tie up chains, wrap ropes that are coming undone, or attach weights to arbors. When in doubt think "Will this product hold thousands of pounds over an actor's head?" If you are not confident in answering yes, call in a qualified professional.

Remember, everything in stage rigging is much heavier than you think. Very few products from home improvement stores can be used in rigging applications. Theatrical equipment is rated and tested by qualified engineers in order to design safe working systems. Improper repairs can take a system from safe to deadly in a matter of seconds.

## What our Customers Are Saying



"We are all very well pleased with the work that Pittsburgh Stage did both at St. Thomas and the Middle School. It is appreciated very much and your cooperation in all stages of the work. Thank you."

-Tuscarora School District

## Beat the Back to School Rush

With the school season almost here, the last thing many facility managers or theater directors are thinking about are the winter and spring plays. However, now is a prime time to think about restocking Incidental supplies. Lamps, gels, and tape do not have an expiration date, and can usually be purchased at a reduced price if bought in bulk. A facility can save on shipping costs by purchasing early instead of opting for last minute rush charges. Purchasing locally or buying several products from a single supplier can also save shipping and handling costs. Contact Pittsburgh Stage for all of your needs.

